

May 2026

# Impact

Child Evangelism  
Fellowship® of  
Franklin and Fulton  
Counties



I was reading through 1<sup>st</sup> Corinthians two weeks ago and a passage stood out to me, God is faithful. I've marked that passage, I've preached on that passage, and the last few years I have lived that passage. God is faithful, through every storm, every diagnosis, every hardship, every team, and every change. My family and I have a little over a month to raise support, move, and basically restart our life as we obediently follow Christ's leading. We are nervous, but excited to see God work. We are confident that God is going to provide and do wonderful things as we transition to offering hope and healing to hurting men.

But my confidence isn't just in what God's going to do with my growing family, but it's seeing God's faithfulness toward our CEF chapter. I trust the committee and their prayerful, thoughtful process as they seek the next director God. I would encourage you to join us in praying not only for wisdom and unity in the search, but also for the person. We know these things take time, so thank you for your patience as the process unfolds in the right way and at the right pace. If you or someone you know may feel called to this opportunity, you can learn more and apply here: <https://www.cefonline.com/job/local-director-for-cef-of-pennsylvania-inc-franklin-fulton-chapter/>.

Hello, my name is Kelly Imes, and I am truly blessed to have been called to serve in the Lord's work here at CEF. I'd love to share a little about myself. I was born and raised in Waynesboro, PA, and have been married to my husband, Steve, for 20 years this July. Together we have three daughters, Tiffany, Sierra, and Desi, and two wonderful grandchildren, Logan and Lizzie. We also have a beloved Boxer named Duchess who is very much part of our family. Our family attends LCBC in Waynesboro, where I have had the joy of serving as a two-year-old Sunday school teacher. We are deeply grateful for our church family and the faithful guidance, love, and support they provide. In my free time, I enjoy baking and decorating cakes, crafting, scrapbooking, and coaching Special Olympics. Serving individuals with special needs is especially close to my heart, both as a sibling and adoptive parent of individuals with intellectual disabilities. I currently volunteer as a Special Olympics head coach here in Waynesboro. I am truly looking forward to meeting everyone at CEF and serving alongside you. It is my greatest joy and privilege to serve our Lord and Savior.



# CYIA Missionaries

Camp isn't our only summer ministry. This summer Maricarmen is returning to share the Gospel via CYIA. CYIA stands for Christian Youth In Action. This program helps reach a whole new group of children in our community. Most of these children don't attend clubs or camp. This year's team consists of three teenagers that are excited to make Christ known to little boys and girls. They are busily going through training as we speak. They will be leading five day clubs at local daycares, community centers, to the Spanish-speaking community, the YMCA, and more. This team will be raising support, so they could use your partnership this summer. Would you consider investing into their lives? If you want to support them just send your gift to the office and designate it to their support.



Alex



Jamuel



Soleil

## Summer Staff

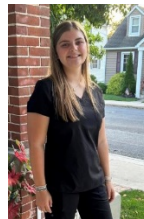
Camp is a huge ministry and demands as many quality staff as we can get. This year we will have around 1300 campers and over 400 staff. We are excited to have three junior staff members joining us this summer. What is junior staff? They are teenagers who will be serving a minimum of four weeks. They are spiritually mature and have a desire to live a surrendered life for Jesus. Many of them feel a future calling to ministry. This summer they will serve as junior counselors, craft leaders, or wherever else they're needed. They serve the role of a missionary, meaning that they will be raising support. Would you consider giving to them financially? Maybe your church would like to adopt one of them as your summer missionary? Or maybe you feel led to give to them. We want them to see God provide for them! You can send in your donation and designate it toward their name.



Oliva



Mae



Lexi

## Social Media

Look us up at CEF® of Franklin and Fulton Counties on Facebook. We are sharing updates, meetings, teacher tips, U-nite®, videos, devotions, and more.

We have also created an online platform to make giving easier. Here is the website for online giving:

<https://franklincef.breezechms.com/give/online>



## Contact us:

Matt Robinson Coordinator

[pastormattcef@gmail.com](mailto:pastormattcef@gmail.com)

240-625-0056

Kelly Imes - Office Manager

Nathan Egolf- Ministry Coordinator

Colin Donatto – Ministry Coordinator

Caleb Russell – Ministry Coordinator

Maricarmen Rodriguez -CYIA Director

PO Box 6, Waynesboro, PA 17268

Office: (717) 762-2115

45 S Broad Street, Waynesboro, PA 17268

Email: [cefoffice@franklincef.com](mailto:cefoffice@franklincef.com)

Website: [www.franklincef.com](http://www.franklincef.com)