

June 2026

Impact

Child Evangelism
Fellowship® of
Franklin and Fulton
Counties

William Shakespeare once wrote “parting is such sweet sorrow.” Those words still ring true 400 years later. My journey with CEF was anything but how I predicted it. Three years ago this month Tiffanie and I accepted the job. We were bright eyed, excited, and had a solid 15 year plan. Tiffanie was filled with drive and purpose. The future seemed so incredibly bright. I don’t need to rewrite the story of the highs and lows, cancer to passing, ruins to rebuilding. The last two plus years have been emotionally and spiritually exhausting. It changed me in the deepest ways possible and brought about a new purpose that otherwise would not have existed. I wanted so badly to make things work, to honor Tiffanie’s legacy, to finish well....but I felt a change in my soul, a transition of burden. Leaving CEF is heavy for me. CEF has been a part of my families life since 2009, the year Tiffanie and I fell in love. Moving to something new, while right, can still be difficult.

I want to leave some reassurances since this is my last update to you. First, God is sovereign and will honor His work in Franklin and Fulton County. Oftentimes people worry and feel anxious when there is a change in leadership, but there is no change on who is enthroned in heaven. This is not a man’s work, this is God’s work. The Lord will lead through the question marks and the unforeseen challenges. He will accomplish that which concerns Him. He has a new director set aside, and we need to pray for whoever that person will be. I am convinced they will be a great fit because that’s exactly what God does. Pray for the committee to have wisdom and discernment. Pray for the staff.

Another reassurance that I want to leave you is the confidence that I have in this staff, especially Nathan and Colin who have taken on more responsibility than you can imagine. I knew we would be without a director so I have slowly shown them a variety of different things that I do. I am confident that they will fill the gap. They are passionate for CEF, they have unique gifting, and are determined to ‘hold the fort’ until God brings another director. Their Christlike, sacrificial, hard work, and compassionate hearts make me so proud.

Finally, I want to thank you for allowing me to serve the Lord. The past two years, while hard, have been wonderful. Pray for my family as we seek the Lord. We are trusting an unknown future to a known God. We love you and are blessed by you!

For His Glory,
Matt, Les, Noah, Maggie, Titus, Phil, and Zoe

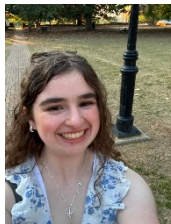


Hearts for Havana

Guess what nation reaches the highest percent of their children? CUBA. That might sound surprising, but there is such a hunger for the Gospel in Cuba. Years ago a group from Franklin County brought literature to the island that sparked a fire for evangelizing to children. These workers are so faithful, but many of them are barely making ends meet. The average missionary in Cuba lives on \$50 a month. Our chapter is committed to helping our workers in Cuba. Would you team up with us? You can send a donation to our chapter, but in the memo put Cuba. Also, keep our Cuban director in your prayers. He is current dealing with serious medical issues.

Summer Staff

We want to invite you to pray for our paid summer staff. This staff is so important for our summer ministries. A unique feature about our three paid teachers is that each of them are pursuing a degree toward some sort of ministry! These young people will be shouldering a big spiritual responsibility by sharing the Gospel with children, most of whom will be unsaved and unchurched. Pray for Cassie, Katie, and Caleb.



A Few Tidbits

Bibles are the most powerful tool that we use in our ministry. It is impossible for us to share the Gospel without the power of the Word. This year we gave out 100's of Bibles, which depleted our stock to nearly zero. We are in desperate need for Bibles. Would you consider donating to help us purchase more Bibles to put into the hands of little children? Each Bible is about \$5, and we will need hundreds of Bibles for camp and clubs. You can send your donation to CEF, but put Bibles in the memo line.

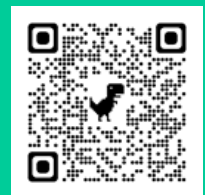
We are excited to host a TCE I course in our area. TCE focuses on providing skills to teachers that want to better share the Gospel with children. You will learn how to present a song, share the Wordless book, break down a memory verse, and how to teach a CEF lesson. The class starts July 30th and runs until September 3rd. Call or email the office if you have any interest.

Social Media

Look us up at CEF® of Franklin and Fulton Counties on Facebook. We are sharing updates, meetings, teacher tips, U-nite®, videos, devotions, and more.

We have also created an online platform to make giving easier. Here is the website for online giving:

<https://franklincef.breezechms.com/give/online>



Contact us:

Matt Robinson Coordinator

pastormattcef@gmail.com

240-625-0056

Kelly Imes - Office Manager

Nathan Egolf- Ministry Coordinator

Colin Donatto – Ministry Coordinator

Caleb Russell – Ministry Coordinator

Maricarmen Rodriguez -CYIA Director

PO Box 6, Waynesboro, PA 17268

Office: (717) 762-2115

45 S Broad Street,
Waynesboro, PA 17268

Email:
ceffice@franklincef.com

Website: www.franklincef.com